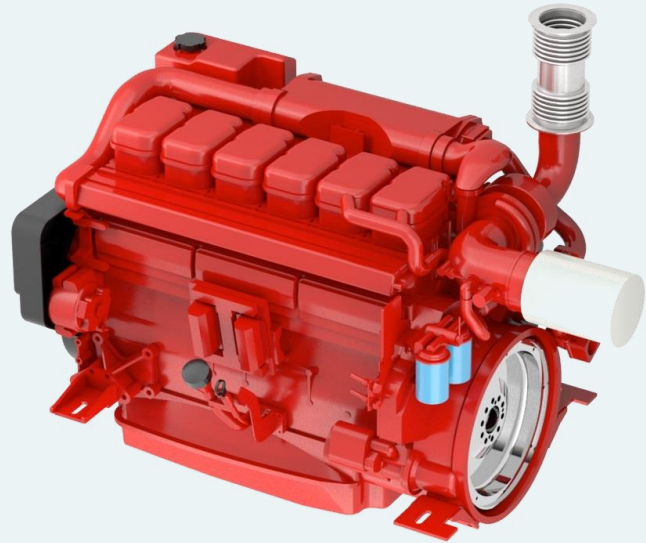


SCANIA DI13 072M

> 650 HP (478 KW) @ 2300 RPM

- > Water cooled exhaust manifold
- > Unit injectors
- > Low RPM
- > High torque



Scania Propulsion

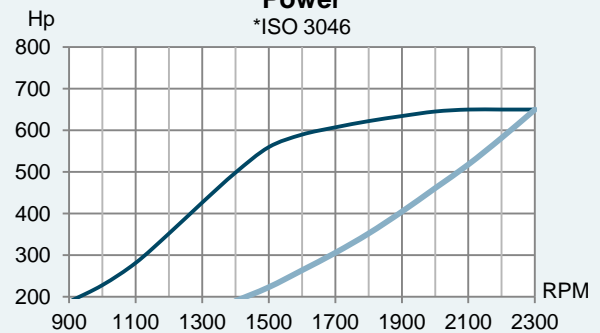
Scania marine engines are designed for strength and durability. The basis of the design is an optimized cylinder block with replaceable water-cooled cylinder liners.

Individual cylinder heads with four valves per cylinder offers easier service and access for repairs. The motors are controlled by Scania EMS control system that monitors the engine's systems and verify that the correct amount of fuel is delivered through the engines electronically controlled unit injectors. Scania EMS ensures low fuel consumption and the cleanest possible exhaust. The engines are type approved by the major classification societies and meet the current environmental standards.

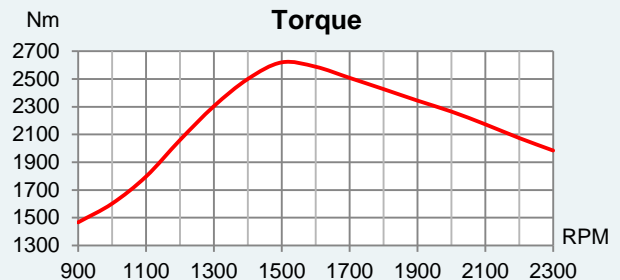
Technical Specifications

Rated power*	650 / 478 (hp / kW)
Engine speed*	2300 RPM
Displacement	12700 cm ³
Number of cylinders	6 in-line
Bore and stroke	130 x 160 mm
Compression ratio	16,3:1
Fuel injection	Unit injectors
Governor type	Electronic
Aspiration	Turbocharged and after cooled
Cooling system	Heat exchanger
Electrical system	24-volt
Weight (dry)	1190 kg
Rating	IFN - Intermittent service
Emission rating	IMO Tier II, EU Stage IIIa

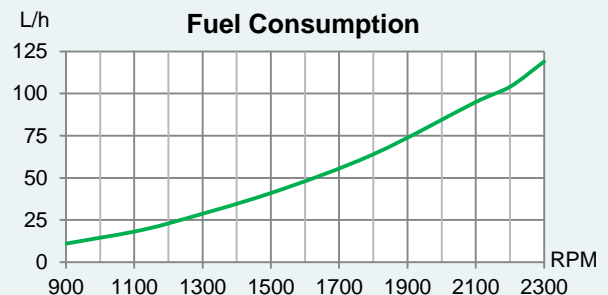
Power
*ISO 3046



Torque



Fuel Consumption



SCANIA DI13 072M

Standard equipment

- > Nogva Motor computer
- > Heat exchanger
- > Silencer (Dry exhaust)
- > Exhaust compensator
- > 2-pole electrical system (24V)
- > Extension cable for computer (8m)
- > Bilge pump for lub.oil
- > Engine brackets
- > Water cooled manifold
- > Water separator (fuel)

Optional equipment

- > Nogva marine gear
- > Nogva CPP propeller
- > Vibration isolators
- > Control lever
- > Control cable
- > Front mounted PTO
- > Other equipment on request

Dimensions

