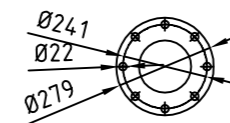
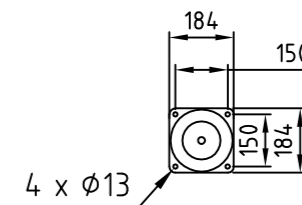


Exhaust flanges



Elastic mountings



4	LTA coolant outlet
3	LTA coolant inlet
2	Main coolant outlet
1	Main coolant inlet
Item	Name

WEIGHT: app. 8000 Kg

NOGVA		Surface	Scale	1:15	Position	Quantity
		Date	Name			
		Drawn	24.08.12	HIR		
		Checked				
		Standard				
		Cummins KTA38-D (KC)				
		Stamford PM734ABC-2 / PM736B-2				
		T91-05289				
02	Added IP44	10.10.13	HIR			Page
01	Edit base frame	16.09.13	HIR			Pg
State	Changes	Date	Name	Filename	T91-05289	