

# SCANIA DI16 076M

> 1150 HP (846 KW) @ 2300 RPM

- > Water cooled exhaust manifold
- > XPI, common rail
- > High torque

## Scania Propulsion

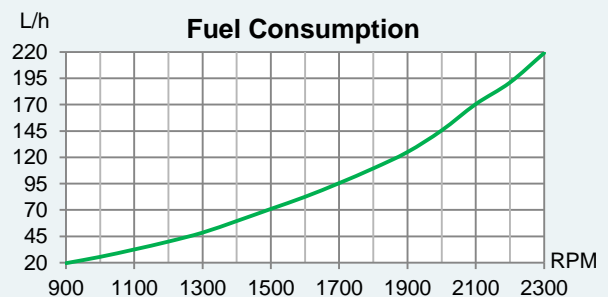
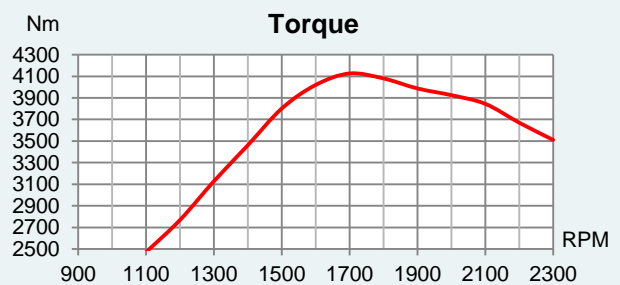
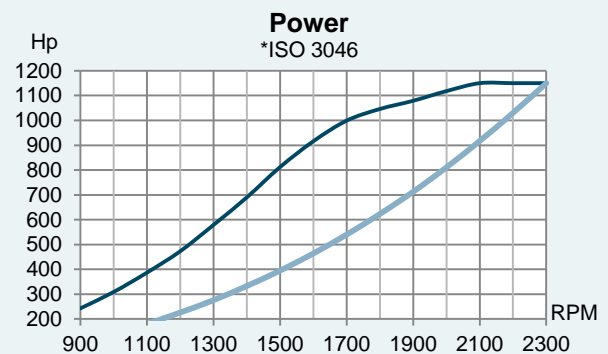
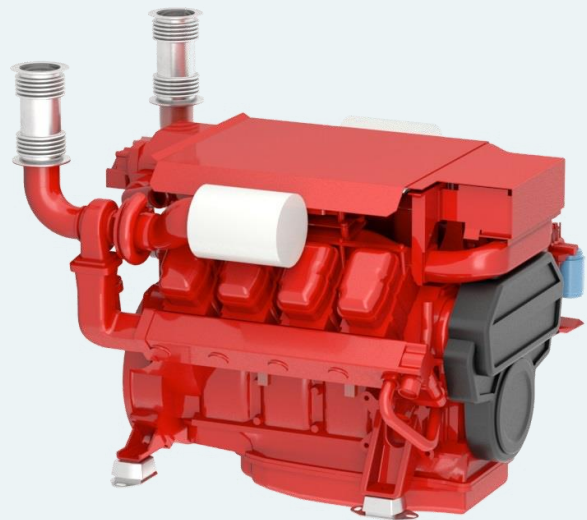
Scania marine engines are designed for strength and durability. The basis of the design is an optimized cylinder block with replaceable water-cooled cylinder liners.

Individual cylinder heads with four valves per cylinder offers easier service and access for repairs. The motors are controlled by Scania EMS control system that monitors the engine's systems and to ensure the control of all aspects related to engine performance. The injection system is Scania's XPI (Extra High Pressure Injection), a common rail system that gives low exhaust emissions with good fuel economy and a high torque.

The engines are type approved by the major classification societies and meet the current environmental standards.

## Technical Specifications

|                     |                               |
|---------------------|-------------------------------|
| Rated power*        | 1150 / 846 (hp / kW)          |
| Engine speed*       | 2300 RPM                      |
| Displacement        | 16400 cm <sup>3</sup>         |
| Number of cylinders | V-8                           |
| Bore and stroke     | 130 x 154 mm                  |
| Compression ratio   | 15,7:1                        |
| Fuel injection      | XPI, Common rail              |
| Governor type       | Electronic                    |
| Aspiration          | Turbocharged and after cooled |
| Cooling system      | Heat exchanger                |
| Electrical system   | 24-volt                       |
| Weight (dry)        | 1670 kg                       |
| Rating              | Patrol craft short            |
| Emission rating     | IMO Tier II, EU Stage IIIa    |



# SCANIA DI16 076M

## Standard equipment

- > Nogva Motor computer
- > Heat exchanger
- > Silencer (Dry exhaust)
- > Exhaust compensator
- > 2-pole electrical system (24V)
- > Extension cable for computer (8m)
- > Bilge pump for lub.oil
- > Engine brackets
- > Water cooled manifold
- > Water separator (fuel)

## Optional equipment

- > Nogva marine gear
- > Nogva CPP propeller
- > Vibration isolators
- > Control lever
- > Control cable
- > Front mounted PTO
- > Other equipment on request

## Dimensions

