

SCANIA DI16 079M

> 550 HP (405 KW) @ 1800 RPM

- > Water cooled exhaust manifold
- > Unit injectors
- > Low RPM
- > High torque

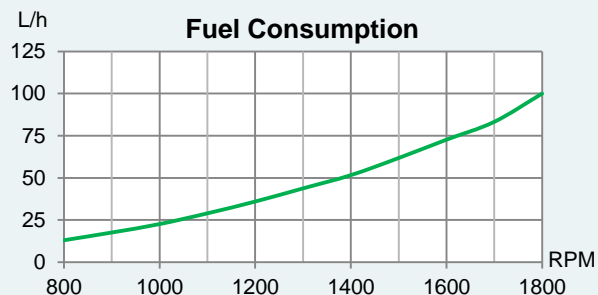
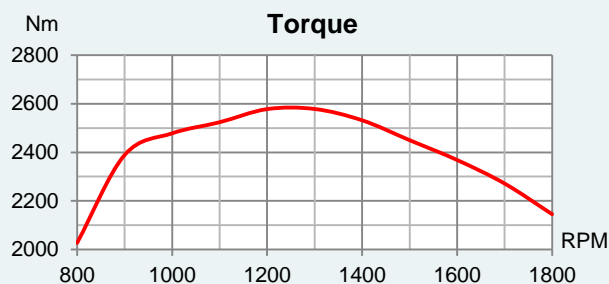
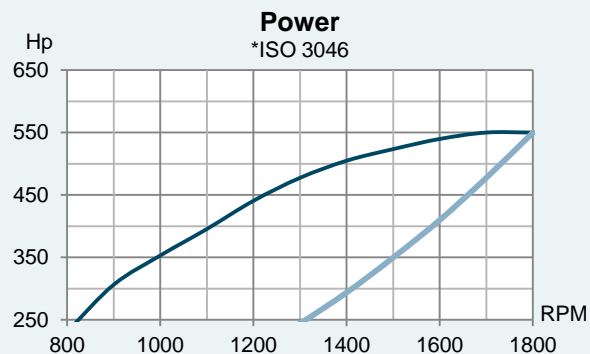
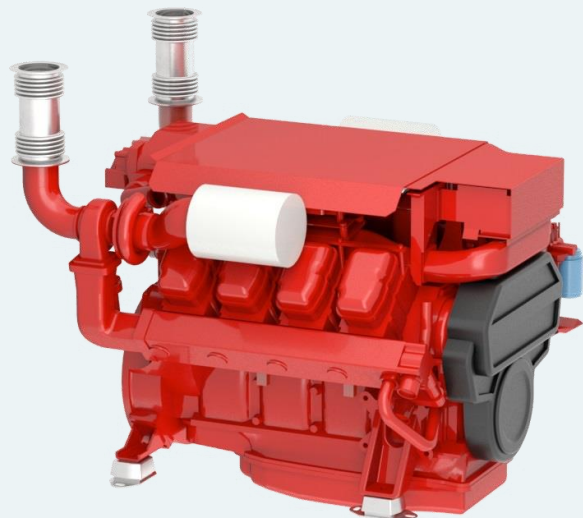
Scania Propulsion

Scania marine engines are designed for strength and durability. The basis of the design is an optimized cylinder block with replaceable water-cooled cylinder liners.

Individual cylinder heads with four valves per cylinder offers easier service and access for repairs. The motors are controlled by Scania EMS control system that monitors the engine's systems and verify that the correct amount of fuel is delivered through the engines electronically controlled unit injectors. Scania EMS ensures low fuel consumption and the cleanest possible exhaust. The engines are type approved by the major classification societies and meet the current environmental standards.

Technical Specifications

Rated power*	550 / 405 (hp / kW)
Engine speed*	1800 RPM
Displacement	16400 cm^3
Number of cylinders	V-8
Bore and stroke	130 x 154 mm
Compression ratio	17.4:1
Fuel injection	Unit injectors
Governor type	Electronic
Aspiration	Turbocharged and after cooled
Cooling system	Keel cooling
Electrical system	24-volt
Weight (dry)	1600 kg
Rating	ICFN – Continuous service
Emission rating	IMO Tier II, EU Stage IIIa



SCANIA DI16 079M

Standard equipment

- > Nogva Motor computer
- > Silencer (Dry exhaust)
- > Exhaust compensator
- > 2-pole electrical system (24V)
- > Extension cable for computer (8m)
- > Bilge pump for lub.oil
- > Engine brackets
- > Water cooled manifold
- > Water separator (fuel)

Optional equipment

- > Nogva marine gear
- > Nogva CPP propeller
- > Vibration isolators
- > Keel cooler
- > Control lever
- > Control cable
- > Front mounted PTO
- > Other equipment on request

Dimensions

