

# SCANIA DI16 070M

> 750 HP (552 KW) @ 1800 RPM

- > Water cooled exhaust manifold
- > Unit injectors
- > Low RPM
- > High torque

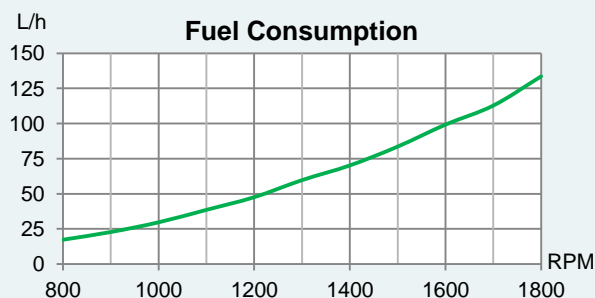
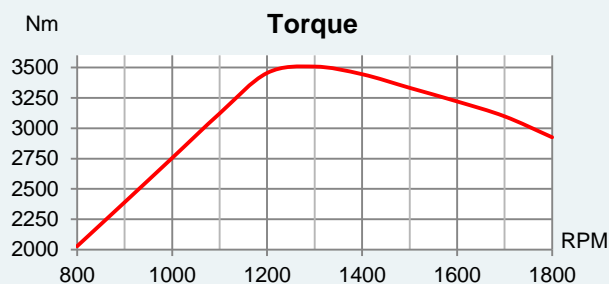
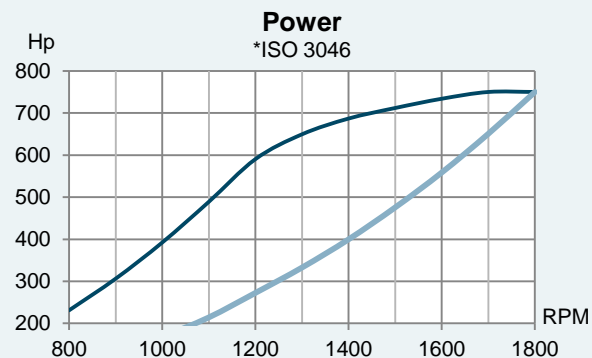
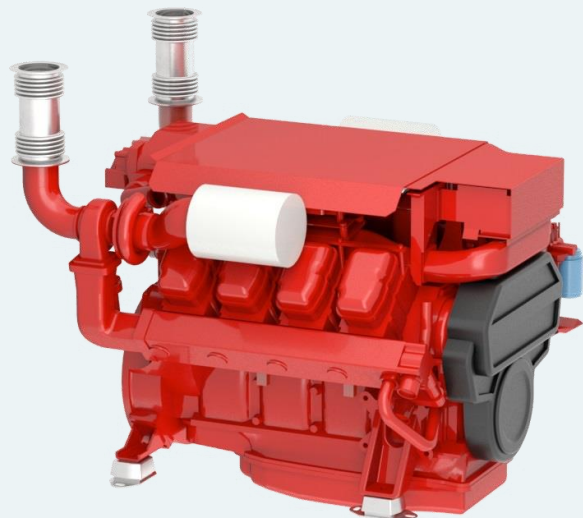
## Scania Propulsion

Scania marine engines are designed for strength and durability. The basis of the design is an optimized cylinder block with replaceable water-cooled cylinder liners.

Individual cylinder heads with four valves per cylinder offers easier service and access for repairs. The motors are controlled by Scania EMS control system that monitors the engine's systems and verify that the correct amount of fuel is delivered through the engines electronically controlled unit injectors. Scania EMS ensures low fuel consumption and the cleanest possible exhaust. The engines are type approved by the major classification societies and meet the current environmental standards.

## Technical Specification

|                     |                               |
|---------------------|-------------------------------|
| Rated power*        | 750 / 552 (hp / kW)           |
| Engine speed*       | 1800 RPM                      |
| Displacement        | 16400 $cm^3$                  |
| Number of cylinders | V-8                           |
| Bore and stroke     | 130 x 154 mm                  |
| Compression ratio   | 16,7:1                        |
| Fuel injection      | Unit injectors                |
| Governor type       | Electronic                    |
| Aspiration          | Turbocharged and after cooled |
| Cooling system      | Heat exchanger                |
| Electrical system   | 24-volt                       |
| Weight (dry)        | 1670 kg                       |
| Rating              | ICFN – Continuous service     |
| Emission rating     | IMO Tier II, EU Stage IIIa    |



# SCANIA DI16 070M

## Standard equipment

- > Nogva Motor computer
- > Heat exchanger
- > Silencer (Dry exhaust)
- > Exhaust compensator
- > 2-pole electrical system (24V)
- > Extension cable for computer (8m)
- > Bilge pump for lub.oil
- > Engine brackets
- > Water cooled manifold
- > Water separator (fuel)

## Optional equipment

- > Nogva marine gear
- > Nogva CPP propeller
- > Vibration isolators
- > Control lever
- > Control cable
- > Front mounted PTO
- > Other equipment on request

## Dimensions

