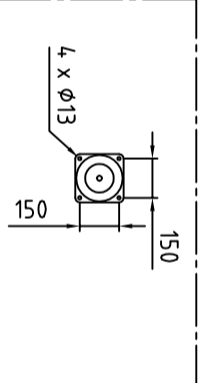


Engine weight: 8800 kg  
 Generator weight: 6000 kg  
 Baseframe weight: 1600 kg

Footprint elastic mounts:



Item	Name	Description
8	Engine switch box	Monitoring system
7	Generator cable entry	
6	LTA Coolant outlet (to cooler)	
5	LTA Coolant return (from cooler)	
4	Coolant outlet (to cooler)	
3	Coolant return (from cooler)	
2	Fuel return	
1	Fuel inlet	

**NOGVA**

**Cummins QSK60**  
 Stamford P80

Date	Name	Surface	Scale	Position	Quantity
16.02.2010	LMF		1:20		
	Drawn				
	Checked				
	Sketched				

State Changes Date Name File No T91-04868

T91-04868

Page Pg