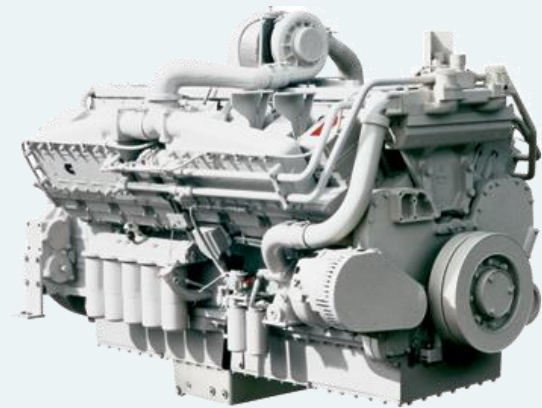


# CUMMINS KTA50-DM1

> (1096-1290 kW) @ 1500-1800 RPM

- > Unit injector
- > Low noise and vibrations



## Cummins Auxiliary Engine

KTA50 has 16 cylinders (V16) with unit injectors that give good fuel economy and low emissions. The air intake is turbocharged. Dry exhaust manifold with water shielding. High torque gives good response when maneuvering and low rpm reduces noise and vibration levels. 24-volt electrical system with Nogva Motor Computer monitoring system. The K-Series has been on the market for over 25 years and has shown that it is reliable and durable in tough marine environments.

Standard version configured for keel cooling.

## Standard equipment

- > Nogva Motor Computer V2-G
- > Electronic regulation
- > Double wall fuel pipe
- > 2-pole electrical system
- > Exhaust compensator
- > Silencer
- > Bilge pump for lub.oil
- > Engine brackets
- > Water cooled manifold
- > Vibration isolators
- > Base frame in steel
- > Heat elements in generator
- > With droop transformer for parallel operation

## Optional equipment

- > Box cooler
- > Plate heat exchanger
- > Radiator cooling
- > Engine heater

Rated power and fuel consumption				
<u>RPM / Hz</u>	1500 / 50		1800 / 60	
Generator effect	1096 kW		1290 kW	
Fuel Consumption 100%	275,9 L/h	214 g/kWh	243,2 L/h	207 g/kWh
Fuel Consumption 75%	211,9 L/h	219 g/kWh	188,9 L/h	211 g/kWh
Fuel Consumption 50%	150,6 L/h	234 g/kWh	136,1 L/h	216 g/kWh
Fuel Consumption 25%	79,8 L/h	247 g/kWh	81,9 L/h	252 g/kWh
<b>Emission rating</b>	IMO Tier 2		IMO Tier 2	

# CUMMINS KTA50-DM1

General Data		Exhaust System		
Model	QSK50-DM1	<b>RPM / Power</b>	<b>1500 / 1096 kW</b>	<b>1800 / 1290 kW</b>
Rating type	Prime power	Exhaust temperature	545 °C	446 °C
Number of cylinders	16	Exhaust flow	205,3m <sup>3</sup> /min	263,6m <sup>3</sup> /min
Engine type	V16, 4-cycle	Air System		
Fuel system	Unit injector	Intake air flow	1329 l/sec	1807 l/sec
Displacement	50,4 L	Heat rejection to ambient	107 kW 6102 BTU/min	74 kW 4200 BTU/min
Aspiration	Turbocharged	Intake manifold pressure	21,1 kPa	29,2 kPa
Bore and stroke	159 x 159 mm	Fuel System		
Compression ratio	13,9:1	Fuel flow to pump	609,5 l/h	609,5 l/h
Weight, dry	4853 kg	Fuel flow return to tank	333,6 l/h	294,8 l/h
Oil capacity	151 L	Average fuel consumption	141,9 l/h	161,4 l/h
Rated engine torque (50Hz)	6978 Nm	Average Noise Level		
Rated engine torque (60Hz)	6844 Nm	Idle	-- dBA @ 1m	-- dBA @ 1m
		Rated	-- dBA @ 1m	-- dBA @ 1m

## Dimensions with Stamford P7

